

HCT-900 Rework Solution

[Handheld Convection Tool]

The HCT-900 Hand Held Convection Tool offers a low cost, versatile rework solution for a wide variety of production and rework application challenges.

- Rework a wide range of simple and complex SMT components
- Rework pin in-hole devices such as sockets and connectors
- Remove solder shorts and splashes by using it with solderbraid and flux
- Plastic applications such as applying shrink wrap to components



| Part No. | Description |
|------------|------------------------------------|
| HCT-900-11 | 115V Hand Held Convection Tool |
| HCT-HE-11 | Heating Element, Replacement, 115V |
| HCT-900-21 | 230V Hand Held Convection Tool |
| HCT-HE-21 | Heating Element, Replacement, 230V |

The HCT-900 can be used for the removal and replacing of electronic components, including lead-free, from Q201 up to 304 pin QFP.



Key Features & Benefits

Versatile Hot Air Tool for soldering and desoldering applications

Robust and compact design

Analog controls for both airflow and heat

Closed loop feedback circuit controls the temperature

Unique low noise air pump (less than 46 dBA) provides precise airflow control

A closed loop feedback circuit allows the desired temperature to be achieved and maintained regardless of changes in the volume of airflow.

| System Specification - HCT-900 | |
|--------------------------------|--|
| Input Voltage | HCT-900-11, 110 VAC, 60 Hz HCT-900-21, 240 VAC, 50 Hz |
| Rated Power | 320 W |
| Surce Temperature | 100 - 500 °C (212 - 932 °F) |
| Heating method | Convection |
| AirFlow | 6 - 25 l/min |
| NoiseLevel | < 46 dBA at maximum airflow |
| Surface resistivity | Unit: 10 ⁵ - 10 ⁶ Ohm, Hand-Piece & tube 10 ⁷ - 10 ¹¹ Ohm |
| Size W x D x H | 170 x 210 x 140 mm (6.7" x 8.7" x 5.5") |
| Weight | 4.7 kg (10.4 lb) |
| Certificaton/Marking | cTUVus, CE |



HCT-900 Nozzles

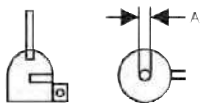
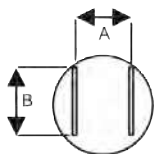
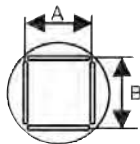
[Handheld Convection Tool]

The HCT-900 is supplied with a standard single jet H-D50 (0.2", 5.0 mm) nozzle. In addition, two rework nozzle kits, predefined for specific applications, are available, as well as a full selection of nozzles.



NZKT-1 Nozzle Kit for Chip Resistors, SOIC & TSOP Package .
Includes (one each): H-D25 H-SL16 H-SL28 H-SOJ40 H-TS48

NZKT-2 Nozzle Kit for PLCC, QFP & BQFP packages.
Includes (one each): H-P20 H-P44 H-P84 H-Q1420 H-Q2626



| Model | Chip Type | A mm (in) | B mm (in) |
|---------|---------------------|--------------|--------------|
| H-P20 | PLCC-20 | 11.9 (0.47") | 11.9 (0.46") |
| H-P28 | PLCC-28 | 14.5 (0.57") | 14.5 (0.57") |
| H-P32 | PLCC-32 | 16.9 (0.67") | 14.3 (0.56") |
| H-P44 | PLCC-44 | 19.5 (0.77") | 19.5 (0.77") |
| H-P52 | PLCC-52 | 21.0 (0.83") | 21.0 (0.83") |
| H-P68 | PLCC-68 | 27.1 (1.07") | 27.1 (1.07") |
| H-P84 | PLCC-84 | 32.4 (1.28") | 32.4 (1.28") |
| H-Q07 | QFP-48 | 8.4 (0.33") | 8.4 (0.33") |
| H-Q10 | QFP-44 | 13.4 (0.53") | 13.4 (0.53") |
| H-Q14 | QFP-52,80 | 17.3 (0.68") | 17.3 (0.68") |
| H-Q1420 | QFP-64,80,100 | 23.4 (0.92") | 18.1 (0.71") |
| H-Q28 | QFP-120,128,144,160 | 31.2 (1.23") | 31.2 (1.23") |
| H-BQ23 | BQFP-100 | 22.4 (0.88") | 22.4 (0.88") |
| H-Q3232 | QFP-240 | 34.5 (1.36") | 34.5 (1.36") |
| H-BQ38 | BQFP-196 | 37.7 (1.48") | 37.7 (1.48") |
| H-Q2626 | QFP-208 | 29.8 (1.17") | 29.8 (1.17") |
| H-S16 | SOIC 14,16 | 6.8 (0.27") | 10.2 (0.4") |
| H-SL16 | SOL 14,16 | 10.6 (0.41") | 10.8 (0.43") |
| H-SL20 | SOL 20,20J | 10.6 (0.41") | 13.3 (0.52") |
| H-SL24 | SOL 24,24J | 10.6 (0.41") | 15.9 (0.63") |
| H-SL28 | SOL 28 | 10.6 (0.41") | 18.4 (0.72") |
| H-SL44 | SOL 44 | 16.0 (0.41") | 27.9 (1.1") |
| H-SOJ32 | SOJ 32 | 13.5 (0.53") | 20.6 (0.81") |
| H-SOJ40 | SOJ 40 | 13.5 (0.53") | 25.4 (1.0") |
| H-TS24 | TSOP 20-24 | 17.0 (0.67") | 7.1 (0.28") |
| H-TS32 | TSOP 28-32 | 21.0 (0.83") | 9.1 (0.36") |
| H-TS40 | TSOP 40 | 21.0 (0.83") | 10.8 (0.43") |
| H-TS48 | TSOP 48 | 21.0 (0.83") | 13.3 (0.52") |
| H-TSW24 | TSOP 20-24 | 10.2 (0.4") | 18.4 (0.72") |
| H-TSW44 | TSOP 24-28/40-44 | 12.7 (0.5") | 19.8 (1.78") |
| Model | ∅ A | | |
| H-D25 | 2.5 mm (0.1") | | |
| H-D50 | 5.0 mm (0.2") | | |
| H-D120 | 12.0 mm (0.47") | | |