



# ESD

# GARMENTS

# 2018



# OUR COMPANY'S GOAL:

*We are dedicated to reach our goal to make our own **DLB** brand a globally respected and accepted trademark of our high quality ESD products, like other trademarks of the leading manufacturers (The USA, Germany, Italy, etc.) of the international markets.*

*With our Hungarian product development and production our aim to is provide guidance on ESD product's market and with innovations we want to improve the effectiveness of ESD protection. With this activity, we increase the security of electronics production and prevent the loss of electronic products by static discharge and make it safe for use.*

*Our colleagues can be proud that with their work they can even save lifes: for example to avoid any mistakes in production of car braking electronics or to provide the proper operation of medical diagnostic devices.*

*We especially proud that our company ensures the livelihood of nearly 100 Hungarian families and we strive with our product and market development to continue to increase D es Tsa Team.*







# CONTENTS

---

\* The product and fabric colors appearing in the catalog may differ in color due to printing, so we do not take any responsibility. Ask our free fabric catalog! Furthermore, it is for any mistake (technical data, size, etc.), responsibility is not accepted by our company and reserves the right to make changes!

# ABOUT OUR COMPANY

D és Tsa Bt. was established in 1996. It is a 100 % Hungarian owned company. Our company is specialized in manufacturing and distributing ESD and Soldering products. In our product range there are more than 25.000 different products. Our self-produced products exist on the market under our own brand name DLB:

- ESD Garments
- ESD Entrance systems and test stations
- ESD Measurement instruments
- ESD Chairs
- ESD Floor mats and table mats

In the partner network of D és Tsa Bt. there are the leading multinational electronics manufacturing corporations, which look on our company as their strategic supplier partner on ESD and Soldering field. Our outstanding results could be thank to our highly professional readiness, flexibility and the high quality standards of our sales and production.

D és Tsa Bt. certified company on the basis of **EN ISO 9001:2008** quality management system.

D és Tsa Bt. provides different ESD services which prove our professionalism and made our position on the market even stronger:

- ESD Professional training
- ESD Audits and Revision
- ESD Certifications
- EPA Measuring of EPA areas
- ESD Laboratory tests
- ESD Consultation

We do all the ESD measurements and product certifications in our own, perfectly equipped ESD laboratories under controlled temperature and humidity.





We produce our ESD Garments according to the ESD standards current at all times: IEC 61340-5-1 and ANSI/ESD S20.20. We provide a unique quality assurance of the production of the ESD Garments, because this process starts at the arrival of the raw materials which go under a thorough ESD and mechanical testing. Of course, the complete ESD clothing can leave our company only after ESD measurements and conformity.

All of our self-produced ESD Garments have the ESD certification, which will be marking with the following label according to the latest ESD standards:



The quality of our products and the reliability of our company have been successfully able to hold the international markets, which resulting in production capacity of more than 80 % of export sales.

You can meet with our company and with our products on the following International Trade Fairs: **PRODUCTRONICA** (Munchen, Germany), **SMT/HYBRID/PACKAGING** (Nurnberg, Germany), **A+A** (Düsseldorf, Germany).



Based on the feedbacks received from our partners, our slogan has become the following sentence:

**„, D É S T S A B T . O F F E R S N O T O N L Y P R O D U C T B U T C O O P E R A T I O N A S W E L L . . . ”**

We hope our products and services can greatly assist your work in the present and in the future.



**Dulay Balázs**  
Owner and Strategy director

# ESD REQUIREMENTS

## ACCORDING TO IEC 61340-4-9:2016

Common industry description/Use of garment system:	Garment type:	Test procedure:	Specific Resistance values:
Garments with some electrical field suppression properties	Static control garment	Resistance point to point	$< 1,0 \times 10^{11} \Omega$
Garments with a designated groundable point	Groundable static control garment	Resistance point to point and resistance point to groundable point	$< 1,0 \times 10^9 \Omega$
Garment in continuous electrical path with a person; however, not the primary ground path	Groundable static control garment	Resistance point to point and resistance point to groundable point	$< 1,0 \times 10^9 \Omega$
Grounded with dual paths to ground via continuous monitoring equipment that requires two separate paths to ground	Groundable static control garment system (garment in combination with person)	Resistance point to point and resistance point to groundable point	$< 1,0 \times 10^9 \Omega$
		Integrated wrist strap in accordance with IEC 61340-4-6	$< 3,5 \times 10^7 \Omega$
Grounded through a single wire constant monitor system	Groundable static control garment system (garment in combination with person)	Resistance point to point and resistance point to groundable point	$< 1,0 \times 10^9 \Omega$
		Integrated wrist strap in accordance with IEC 61340-4-6	$< 3,5 \times 10^7 \Omega$
Garment used as primary grounding path for personnel	Groundable static control garment system (Garment in combination with person)	Resistance point to point and resistance point to groundable point	$< 1,0 \times 10^9 \Omega$
		Integrated wrist strap in accordance with IEC 61340-4-6	$< 3,5 \times 10^7 \Omega$



Our ESD clothing products meet the above requirements!  
In case of groundable static control garment, the additional order code is **GND**









# ESD FABRICS

---

# ESD FABRICS

Type	KK01	TH55	TH96	CT35	TH65	CR10	WC10	TS15	TS16	PS21	LY20	THSS	THSB
Material	Woven	Woven	Woven	Woven	Woven	Woven (clean room)	Woven (water repellent)	Knitted	Knitted (Pique)	Knitted	Knitted	Knitted	Knitted (Fluffy)
Polyester (%)	74	63	-	69	36	98	98	-	-	47	-	48	48
Cotton (%)	24	33	96	27	60	-	-	96	96	50	88	48	48
Conductive fibre (%)	2	4	4	4	4	2	2	4	4	3	4	4	4
Lycra (%)	-	-	-	-	-	-	-	-	-	-	8	-	-
Weight (g/m <sup>2</sup> )	125	155	125	130	160	96	120	150	210	210	200	280	320
Colour													
Page	14	15	15	16	16	17	17	18	18	19	19	20	20

# KK01 FABRIC

## FEATURES

- ▶ Static dissipative woven fabric (carbon loaded yarns in 5 mm grid)
- ▶ **Composition:** 74% Polyester, 24% Cotton, 2% Conductive fiber
- ▶ **Fabric Weight:** 125 g/m<sup>2</sup>
- ▶ **Finish:** Crease resists, workwear
- ▶ **Resistance from point to point (Rp):** 10<sup>6</sup> - 10<sup>7</sup> Ohm
- ▶ **Charging time:** < 2 seconds
- ▶ Electrical properties maintained after more than 50 industrial washings according to IEC 61340-5-1 and ANSI / ESD S20.20
- ▶ Complies with IEC 61340-5-1 and ANSI / ESD S20.20
- ▶ Developed for industrial washing

**!** Machine washable up to 40 °C  
 Ironing at maximum 110 °C  
 Do not use acid or alkali  
 Do not bleach  
**●** Tumble dry at low temperature

## AVAILABLE COLOURS

Black (BK), Dark Gray (DG), Light Gray (LG), White (W), Burgundy (B), Red (R), Light Pink (LPK), Dark Green (DZ), Mint Green (MG), Light Green (LE), Royal Blue (RB), Light Blue (LB), Orange (O), Yellow (Y)



# TH55 FABRIC

## FEATURES

- ▶ Static dissipative woven fabric (carbon loaded yarns in 5 mm grid)
- ▶ **Composition:** 63% Polyester 33% Cotton 4% Conductive fiber
- ▶ **Fabric Weight:** 155 g/m<sup>2</sup>
- ▶ **Finish:** Crease resists, workwear
- ▶ **Resistance from point to point (Rp):** 10<sup>6</sup> - 10<sup>7</sup> Ohm
- ▶ **Charging time:** < 2 seconds
- ▶ Electrical properties maintained after more than 50 industrial washings according to IEC 61340-5-1 and ANSI / ESD S20.20
- ▶ Complies with IEC 61340-5-1 and ANSI / ESD S20.20
- ▶ Developed for industrial washing

**!** Machine washable up to 40 °C  
 Ironing at maximum 110 °C  
 Do not use acid or alkali  
 Do not bleach  
**●** Tumble dry at low temperature

## AVAILABLE COLOURS

White (W), Light Blue (LB), Royal Blue (RB)





# TH96 FABRIC

## FEATURES

- Static dissipative woven fabric (carbon loaded yarns in 5 mm grid)
- **Composition:** 96% Cotton 4% Conductive fiber
- **Fabric Weight:** 125 g/m<sup>2</sup>
- **Finish:** Workwear
- **Resistance from point to point (Rp):** 10<sup>6</sup> - 10<sup>7</sup> Ohm
- **Charging time:** < 2 seconds
- Electrical properties maintained after more than 50 industrial washings according to IEC 61340-5-1 and ANSI / ESD S20.20
- Complies with IEC 61340-5-1 and ANSI / ESD S20.20
- Developed for industrial washing

- ! Machine washable up to 40 °C
- ! Ironing at maximum 110 °C
- ! Do not use acid or alkali
- ! Do not bleach
- ! Tumble dry at low temperature

## AVAILABLE COLOURS

White (W)



# CT35 FABRIC

## FEATURES

- Static dissipative woven fabric (carbon loaded yarns in 5 mm grid)
- **Composition:** 69% Polyester 27% Cotton 4% Conductive fiber
- **Fabric Weight:** 130 g/m<sup>2</sup>
- **Finish:** Crease resists, workwear
- **Resistance from point to point (Rp):** 10<sup>6</sup> - 10<sup>7</sup> Ohm
- **Charging time:** < 2 seconds
- Electrical properties maintained after more than 50 industrial washings according to IEC 61340-5-1 and ANSI / ESD S20.20
- Complies with IEC 61340-5-1 and ANSI / ESD S20.20
- Developed for industrial washing

- ! Machine washable up to 40 °C
- ! Ironing at maximum 110 °C
- ! Do not use acid or alkali
- ! Do not bleach
- ! Tumble dry at low temperature

## AVAILABLE COLOURS

White (W)



# TH65 FABRIC

## FEATURES

- ▶ Static dissipative woven fabric (carbon loaded yarns in 5 mm grid)
- ▶ **Composition:** 36% Polyester 60% Cotton 4% Conductive fiber
- ▶ **Fabric Weight:** 160 g/m<sup>2</sup>
- ▶ **Finish:** Crease resists, workwear
- ▶ **Resistance from point to point (Rp):** 10<sup>6</sup> - 10<sup>7</sup> Ohm
- ▶ **Charging time:** < 2 seconds
- ▶ Electrical properties maintained after more than 50 industrial washings according to IEC 61340-5-1 and ANSI / ESD S20.20
- ▶ Complies with IEC 61340-5-1 and ANSI / ESD S20.20
- ▶ Developed for industrial washing

**!** Machine washable up to 40 °C  
 Ironing at maximum 110 °C  
 Do not use acid or alkali  
 Do not bleach  
**●** Tumble dry at low temperature

## AVAILABLE COLOURS

White (W)



# CR10 FABRIC

## FEATURES

- ▶ Static dissipative woven fabric (carbon loaded yarns in 5 mm grid)
- ▶ For Clean Room class 1000
- ▶ **Composition:** 98% Polyester 2% Conductive fiber
- ▶ **Fabric Weight:** 96 g/m<sup>2</sup>
- ▶ **Finish:** Crease resists, workwear
- ▶ **Resistance from point to point (Rp):** 10<sup>6</sup> - 10<sup>7</sup> Ohm
- ▶ **Charging time:** < 2 seconds
- ▶ Electrical properties maintained after more than 50 industrial washings according to IEC 61340-5-1 and ANSI / ESD S20.20
- ▶ Complies with IEC 61340-5-1 and ANSI / ESD S20.20
- ▶ Developed for industrial washing

**!** Machine washable up to 40 °C  
 Ironing at maximum 110 °C  
 Do not use acid or alkali  
 Do not bleach  
**●** Tumble dry at low temperature

## AVAILABLE COLOURS

White (W)



# WC10 FABRIC

## FEATURES

- Static dissipative woven fabric (carbon loaded yarns in 5 mm grid)
- Water repellent material, for outdoor use
- For Clean Room also, class 1000
- **Composition:** 98% Polyester 2% Conductive fiber
- **Fabric Weight:** 120 g/m<sup>2</sup>
- **Finish:** Crease resists, workwear
- **Resistance from point to point (Rp):** 10<sup>6</sup> - 10<sup>7</sup> Ohm
- **Charging time:** < 2 seconds
- Electrical properties maintained after more than 50 industrial washings according to IEC 61340-5-1 and ANSI / ESD S20.20
- Complies with IEC 61340-5-1 and ANSI / ESD S20.20
- Developed for industrial washing

- ! Machine washable up to 40 °C
- ! Ironing at maximum 110 °C
- ! Do not use acid or alkali
- ! Do not bleach
- ! Tumble dry at low temperature

## AVAILABLE COLOURS

Navy Blue (NB)



# TS15 FABRIC

## FEATURES

- Static dissipative knitted fabric (with carbon yarn)
- **Composition:** 96% Cotton 4% Conductive fiber
- **Fabric Weight:** 150 g/m<sup>2</sup>
- **Finish:** Crease resist, workwear
- **Resistance from point to point (Rp):** 10<sup>6</sup> - 10<sup>7</sup> Ohm
- **Charging time:** < 2 seconds
- Electrical properties maintained after more than 40 industrial washings according to IEC 61340-5-1 and ANSI / ESD S20.20
- Complies with IEC 61340-5-1 and ANSI / ESD S20.20
- Developed for industrial washing

- ! Machine washable up to 40 °C
- ! Ironing at maximum 110 °C
- ! Do not use acid or alkali
- ! Do not bleach
- ! Tumble dry at low temperature

## AVAILABLE COLOURS



White (W), Gray (GA), Royal Blue (RB), Navy blue (NB), Black (BK)



# TS16 FABRIC

## FEATURES

- ▶ Static dissipative knitted **PIQUE** fabric (with carbon yarn)
- ▶ **Composition:** 96% Cotton 4% Conductive fiber
- ▶ **Fabric Weight:** 210 g/m<sup>2</sup>
- ▶ **Finish:** Crease resists, workwear
- ▶ **Resistance from point to point (Rp):** 10<sup>6</sup> - 10<sup>7</sup> Ohm
- ▶ **Charging time:** < 2 seconds
- ▶ Electrical properties maintained after more than 40 industrial washings according to IEC 61340-5-1 and ANSI / ESD S20.20
- ▶ Complies with IEC 61340-5-1 and ANSI / ESD S20.20
- ▶ Developed for industrial washing

 Machine washable up to 40 °C  
 Ironing at maximum 110 °C  
 Do not use acid or alkali  
 Do not bleach  
 Tumble dry at low temperature

## AVAILABLE COLOURS



White (W), Navy blue (NB), Black (BK)



# PS21 FABRIC

## FEATURES

- ▶ Static dissipative knitted fabric (with carbon yarn)
- ▶ **Composition:** 47% Polyester 50% Cotton 3% Conductive fiber
- ▶ **Fabric Weight:** 210 g/m<sup>2</sup>
- ▶ **Finish:** Crease resists, workwear
- ▶ **Resistance from point to point (Rp):** 10<sup>6</sup> - 10<sup>7</sup> Ohm
- ▶ **Charging time:** < 2 seconds
- ▶ Electrical properties maintained after more than 40 industrial washings according to IEC 61340-5-1 and ANSI / ESD S20.20
- ▶ Complies with IEC 61340-5-1 and ANSI / ESD S20.20
- ▶ Developed for industrial washing

 Machine washable up to 40 °C  
 Ironing at maximum 110 °C  
 Do not use acid or alkali  
 Do not bleach  
 Tumble dry at low temperature

## AVAILABLE COLOURS

Gray (GA), Royal Blue (RB), Navy blue (NB), Black (BK)







# LY20 FABRIC

## FEATURES

- Static dissipative knitted fabric (with carbon yarn)
- **Composition:** 88% Cotton 8% Lycra 4% Conductive fiber
- **Fabric Weight:** 200 g/m<sup>2</sup>
- **Finish:** Crease resists, workwear
- **Resistance from point to point (Rp):** 10<sup>6</sup> - 10<sup>7</sup> Ohm
- **Charging time:** < 2 seconds
- Electrical properties maintained after more than 40 industrial washings according to IEC 61340-5-1 and ANSI / ESD S20.20
- Complies with IEC 61340-5-1 and ANSI / ESD S20.20
- Developed for industrial washing

 Machine washable up to 40 °C  
 Ironing at maximum 110 °C  
 Do not use acid or alkali  
 Do not bleach  
 Tumble dry at low temperature

## AVAILABLE COLOURS



Black (BK)



# THSS FABRIC

## FEATURES

- Static dissipative knitted fabric (with carbon yarn)
- **Composition:** 48% Polyester 48% Cotton 4% Conductive fiber
- **Fabric Weight:** 280 g/m<sup>2</sup>
- **Finish:** Crease resists, workwear
- **Resistance from point to point (Rp):** 10<sup>6</sup> - 10<sup>7</sup> Ohm
- **Charging time:** < 2 seconds
- Electrical properties maintained after more than 40 industrial washings according to IEC 61340-5-1 and ANSI / ESD S20.20
- Complies with IEC 61340-5-1 and ANSI / ESD S20.20
- Developed for industrial washing

 Machine washable up to 40 °C  
 Ironing at maximum 110 °C  
 Do not use acid or alkali  
 Do not bleach  
 Tumble dry at low temperature

## AVAILABLE COLOURS

Navy blue (NB), Black (BK)



# THSB FABRIC

## FEATURES

- ▶ Static dissipative knitted fabric (with carbon yard)
- ▶ Fluffy inner side
- ▶ **Composition:** 48% Polyester 48% Cotton 4% Conductive fiber
- ▶ **Fabric Weight:** 320 g/m<sup>2</sup>
- ▶ **Finish:** Crease resists, workwear
- ▶ **Resistance from point to point (Rp):** 10<sup>6</sup> - 10<sup>7</sup> Ohm
- ▶ **Charging time:** < 2 seconds
- ▶ Electrical properties maintained after more than 40 industrial washings according to IEC 61340-5-1 and ANSI / ESD S20.20
- ▶ Complies with IEC 61340-5-1 and ANSI / ESD S20.20
- ▶ Developed for industrial washing

- ! Machine washable up to 40 °C
- ! Ironing at maximum 110 °C
- ! Do not use acid or alkali
- ! Do not bleach
- ! Tumble dry at low temperature

## AVAILABLE COLOURS

Black (BK)

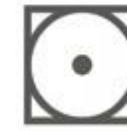
BK



# WASHING INSTRUCTIONS

Conductive carbon fibers used in ESD fabrics are very sensitive to high temperatures, alkalis, acids, rinses (softeners) and bleaches. Inadequate use may cause damage to carbon fibers and ESD clothing may lose or significantly deteriorate ESD parameters. Therefore, wash ESD clothing very carefully, in each case please follow the instructions:

- i** In order to preserve the long life of ESD clothings, please use industrial laundries who can provide controlled, documented washing procedures and environment!
- i** Washing in cold or not warmer than 40 °C (104 °F) lukewarm water with neutral liquid detergent!
- i** Do not use detergent containing bleach and fabric softener ingredient containing chlorine!
- i** Bleachers are forbidden! Use of alkalis, acids or fabric softeners is prohibited!
- i** Do not dry clean!
- i** Drying in the open air and / or at a temperature up to 50 °C (120 °F) or less!
- i** The ESD clothing does not require ironing but if absolutely necessary in that case the maximum temperature is 110 °C (230 °F) or lower!



# WARRANTY

- !** The warranty is strictly valid under controlled and documented industrial laundry conditions, concern the fabric washing cycle as specified in the technical data's.
- !** The warranty is NOT valid if the washing process is made in a home enviroment!
- !** The warranty covers ESD parameters and possible sewing errors according to IEC 61340-5-1 and ANSI / ESD S20.20 standard issued only!
- !** The warranty is not cover the size and shrinkage differences within the tolerances given on the size cart!



# STANDARD LINE





**ESS**

... **24**

**ESS ESD SMOCK**  
1/2 LENGTH



**EFS**

... **25**

**EFS ESD SMOCK**  
1/2 LENGTH



**ESL**

... **26**

**ESL ESD SMOCK**  
2/3 LENGTH



**EFL**

... **27**

**EFL ESD SMOCK**  
2/3 LENGTH



**ESX**

... **28**

**ESX ESD SMOCK**  
1/3 LENGTH



**EFX**

... **29**

**EFX ESD SMOCK**  
1/3 LENGTH



**ET**

... **30**

**ET ESD MALE TROUSERS**



**ETF**

... **31**

**ETF ESD FEMALE TROUSERS**



**OT**

... **32**

**OT ESD TROUSERS WITH BINDLES**



**OJ**

... **33**

**OJ ESD JACKET**



**OLL**

... **34**

**OLL ESD HOODIED COVERALL**



**HIV**

... **35**

**HIV ESD HIGH VISIBILITY VEST**



**BB**

... **36**

**BB ESD BASEBALL CAP**



**BP**

... **37**

**BP ESD CAP WITH NET**

# ESS ESD SMOCK

## 1/2 LENGTH

### FEATURES

- Available sizes: unisex XS - 5XL
- 2 side pockets, 1 breast pocket with ESD symbol
- Hidden snap-fasteners
- Cuff with snap-fasteners

Embroidered or printed company logo or text available upon request!

Individual custom made ESD Clothing also available!

### AVAILABLE FABRICS AND COLOURS

#### KK01 FABRIC



#### TH55 FABRIC



#### TH65 FABRIC



#### TH96 FABRIC



#### CR10 FABRIC



#### CT35 FABRIC



### ORDERING CODE

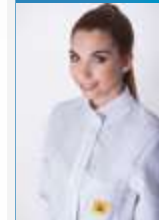
**ESS - KK01 - W L**  
 style fabric colour size



Certified clothing according to the 2016 ESD standard. It's proved with the following tag.

### OPTIONAL

#### STANDING COLLAR



CODE: **AGL**

#### CONDUCTIVE ELASTICATED CUFF



CODE: **RAN**

#### WAIST KNITTER



CODE: **OTO**

### GROUNDING SMOCK - CODE: **GND**



### SIZE CHART (cm)

ESS ESD Smock	XS	S	M	L	XL	XXL	3XL	4XL	5XL
Cuff	32	33	34	35	36	36	37	37	38
Sleeve	51	53	57	61	65	65	67	67	68
Length	78	80	82	84	88	90	92	94	96
Chest	90	98	106	114	122	130	136	142	148
Hip	90	98	106	114	122	130	136	142	148
Shoulder	40	43	46	49	52	55	58	61	65
Shoulder outline	56	58	60	62	64	66	68	70	72

Size tolerance (Before washing): 2%

# EFS ESD SMOCK

## 1/2 LENGTH

### FEATURES

- Available sizes: female XS - 5XL
- 2 side pockets, 1 breast pocket with ESD symbol
- Hidden snap-fasteners
- Cuff with snap-fasteners

Embroidered or printed company logo or text available upon request!

Individual custom made ESD Clothing also available!

## AVAILABLE FABRICS AND COLOURS

### KK01 FABRIC



### ORDERING CODE

**EFS** - **KK01** - **RB** **L**  
 style fabric colour size



Certified clothing according to the 2016 ESD standard. It's proved with the following tag.

### OPTIONAL

#### STANDING COLLAR



CODE: **AGL**

#### CONDUCTIVE ELASTICATED CUFF



CODE: **RAN**

#### WAIST KNITTER



CODE: **OTO**

### GROUNDING SMOCK - CODE: **GND**



### TH55 FABRIC



### TH65 FABRIC



### TH96 FABRIC



### CR10 FABRIC



### CT35 FABRIC



### SIZE CHART (cm)

EFS ESD Smock	XS	S	M	L	XL	XXL	3XL	4XL	5XL
Cuff	32	33	34	35	36	36	37	37	38
Sleeve	51	53	57	61	65	65	67	67	68
Length	78	80	82	84	88	90	92	94	96
Chest	90	98	106	114	122	130	136	142	148
Hip	90	98	106	114	122	130	136	142	148
Shoulder	40	43	46	49	52	55	58	61	65
Shoulder outline	56	58	60	62	64	66	68	70	72

Size tolerance (Before washing): 2%



# ESL ESD SMOCK

## 2/3 LENGTH

### FEATURES

- Available sizes: unisex XS - 5XL
- 2 side pockets, 1 breast pocket with ESD symbol
- Hidden snap-fasteners
- Cuff with snap-fasteners

Embroidered or printed company logo or text available upon request!

Individual custom made ESD Clothing also available!

### AVAILABLE FABRICS AND COLOURS

#### KK01 FABRIC



#### ORDERING CODE

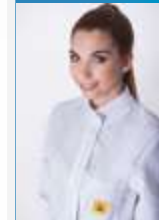
**ESL** - **KK01** - **W** **L**  
 style fabric colour size



Certified clothing according to the 2016 ESD standard. It's proved with the following tag.

#### OPTIONAL

##### STANDING COLLAR



CODE: **AGL**

##### CONDUCTIVE ELASTICATED CUFF



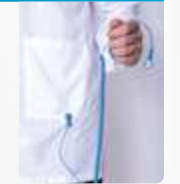
CODE: **RAN**

##### WAIST KNITTER



CODE: **OTO**

#### GROUNDING SMOCK - CODE: **GND**



#### TH55 FABRIC



#### TH65 FABRIC



#### TH96 FABRIC



#### CR10 FABRIC



#### CT35 FABRIC



#### SIZE CHART (cm)

ESL ESD Smock	XS	S	M	L	XL	XXL	3XL	4XL	5XL
Cuff	32	33	34	35	36	36	37	37	38
Sleeve	51	53	57	61	65	65	67	67	68
Length	89	91	93	95	99	101	103	105	107
Chest	90	98	106	114	122	130	136	142	148
Hip	90	98	106	114	122	130	136	142	148
Shoulder	40	43	46	49	52	55	58	61	65
Shoulder outline	56	58	60	62	64	66	68	70	72

Size tolerance (Before washing): 2%



# EFL ESD SMOCK

## 2/3 LENGTH

### FEATURES

- Available sizes: female XS - 5XL
- 2 side pockets, 1 breast pocket with ESD symbol
- Hidden snap-fasteners
- Cuff with snap-fasteners

Embroidered or printed company logo or text available upon request!

Individual custom made ESD Clothing also available!

## AVAILABLE FABRICS AND COLOURS

### KK01 FABRIC



### ORDERING CODE

**EFL** - **KK01** - **RB** **L**  
 style fabric colour size



Certified clothing according to the 2016 ESD standard. It's proved with the following tag.

### OPTIONAL

#### STANDING COLLAR



CODE: **AGL**

#### CONDUCTIVE ELASTICATED CUFF



CODE: **RAN**

#### WAIST KNITTER



CODE: **OTO**

### GROUNDING SMOCK - CODE: **GND**



### TH55 FABRIC



### TH65 FABRIC



### TH96 FABRIC



### CR10 FABRIC



### CT35 FABRIC



### SIZE CHART (cm)

EFL ESD Smock	XS	S	M	L	XL	XXL	3XL	4XL	5XL
Cuff	32	33	34	35	36	36	37	37	38
Sleeve	51	53	57	61	65	65	67	67	68
Length	89	91	93	95	99	101	103	105	107
Chest	90	98	106	114	122	130	136	142	148
Hip	90	98	106	114	122	130	136	142	148
Shoulder	40	43	46	49	52	55	58	61	65
Shoulder outline	56	58	60	62	64	66	68	70	72

Size tolerance (Before washing): 2%





# ESX ESD SMOCK

## 1/3 LENGTH



### FEATURES

- Available sizes: unisex XS - 5XL
- 2 side pockets, 1 breast pocket with ESD symbol
- Hidden snap-fasteners
- Cuff with snap-fasteners

Embroidered or printed company logo or text available upon request!

Individual custom made ESD Clothing also available!

## AVAILABLE FABRICS AND COLOURS

### KK01 FABRIC



### ORDERING CODE

**ESX - KK01 - W L**  
 style fabric colour size



Certified clothing according to the 2016 ESD standard. It's proved with the following tag.

### OPTIONAL

#### STANDING COLLAR



CODE: **AGL**

#### CONDUCTIVE ELASTICATED CUFF



CODE: **RAN**

#### WAIST KNITTER



CODE: **OTO**

### GROUNDING SMOCK - CODE: **GND**



### TH55 FABRIC



### TH65 FABRIC



### TH96 FABRIC



### CR10 FABRIC



### CT35 FABRIC



### SIZE CHART (cm)

ESX ESD Smock	XS	S	M	L	XL	XXL	3XL	4XL	5XL
Cuff	32	33	34	35	36	36	37	37	38
Sleeve	51	53	57	61	65	65	67	67	68
Length	58	60	62	64	68	70	72	74	76
Chest	90	98	106	114	122	130	136	142	148
Hip	90	98	106	114	122	130	136	142	148
Shoulder	40	43	46	49	52	55	58	61	65
Shoulder outline	56	58	60	62	64	66	68	70	72

Size tolerance (Before washing): 2%

# EFX ESD SMOCK

## 1/3 LENGTH

### FEATURES

- Available sizes: female XS - 5XL
- 2 side pockets, 1 breast pocket with ESD symbol
- Hidden snap-fasteners
- Cuff with snap-fasteners

Embroidered or printed company logo or text available upon request!

Individual custom made ESD Clothing also available!

## AVAILABLE FABRICS AND COLOURS

### KK01 FABRIC



### ORDERING CODE

**EFX** - **KK01** - **RB** **L**  
 style fabric colour size



Certified clothing according to the 2016 ESD standard. It's proved with the following tag.

### OPTIONAL

#### STANDING COLLAR



CODE: **AGL**

#### CONDUCTIVE ELASTICATED CUFF



CODE: **RAN**

#### WAIST KNITTER



CODE: **OTO**

### GROUNDING SMOCK - CODE: **GND**



### TH55 FABRIC



### TH65 FABRIC



### TH96 FABRIC



### CR10 FABRIC



### CT35 FABRIC



### SIZE CHART (cm)

EFX ESD Smock	XS	S	M	L	XL	XXL	3XL	4XL	5XL
Cuff	32	33	34	35	36	36	37	37	38
Sleeve	51	53	57	61	65	65	67	67	68
Length	58	60	62	64	68	70	72	74	76
Chest	90	98	106	114	122	130	136	142	148
Hip	90	98	106	114	122	130	136	142	148
Shoulder	40	43	46	49	52	55	58	61	65
Shoulder outline	56	58	60	62	64	66	68	70	72

Size tolerance (Before washing): 2%



# ET ESD MALE TROUSERS

## FEATURES

- Straight style
- Available sizes: Male XS - 5XL
- 2 side pockets, 1 hip pocket with ESD symbol
- Rubberized waist with snap-fastener

Embroidered or printed company logo or text available upon request!

Individual custom made ESD Clothing also available!

## AVAILABLE FABRICS AND COLOURS

### KK01 FABRIC



### TH55 FABRIC



### TH65 FABRIC



### TH96 FABRIC



### CR10 FABRIC



### CT35 FABRIC



## ORDERING CODE

**ET - TH55 - RB L**  
 style fabric colour size



Certified clothing according to the 2016 ESD standard. It's proved with the following tag.



## SIZE CHART (cm)

ET ESD Trousers	XS	S	M	L	XL	XXL	3XL	4XL	5XL
Length external	102	104	106	108	110	112	114	116	118
Hip	98	102	107	111	115	119	123	128	132

Size tolerance (Before washing): 2%

# ETF ESD FEMALE TROUSERS

## FEATURES

- Straight style
- Available sizes: female XS - 5XL
- 2 side pockets, 1 hip pocket with ESD symbol
- Rubberized waist with snap-fastener

Embroidered or printed company logo or text available upon request!

Individual custom made ESD Clothing also available!

## AVAILABLE FABRICS AND COLOURS

### KK01 FABRIC



### TH55 FABRIC



### TH65 FABRIC



### TH96 FABRIC



### CR10 FABRIC



### CT35 FABRIC



## ORDERING CODE

**ETF - TH55 - W L**  
 style fabric colour size



Certified clothing according to the 2016 ESD standard. It's proved with the following tag.

## SIZE CHART (cm)

ETF ESD Trousers	XS	S	M	L	XL	XXL	3XL	4XL	5XL
Length external	102	104	106	108	110	112	114	116	118
Hip	84	90	96	102	108	114	120	126	132

Size tolerance (Before washing): 2%



# OT ESD TROUSERS WITH BRIDLES



## FEATURES

- Available sizes: unisex XS - 5XL
- 2 side pockets, 1 breast pocket with ESD symbol
- 2 side pocket on leg
- 2 quick release buckles

Embroidered or printed company logo or text available upon request!

Individual custom made ESD Clothing also available!

## AVAILABLE FABRICS AND COLOURS

### KK01 FABRIC



### TH55 FABRIC



### TH65 FABRIC



### TH96 FABRIC



### CR10 FABRIC



### CT35 FABRIC



## ORDERING CODE

**OT - TH55 - RB L**  
 style fabric colour size



Certified clothing according to the 2016 ESD standard. It's proved with the following tag.

## SIZE CHART (cm)

OT ESD Trousers with bridles	XS	S	M	L	XL	XXL	3XL	4XL	5XL
Length external	102	104	106	108	110	112	114	116	118
Hip	98	102	107	111	115	119	123	128	132

Size tolerance (Before washing): 2%



# OJ ESD JACKET

## FEATURES

- Available sizes: unisex XS - 5XL
- 2 side pockets, 2 breast pockets
- ESD logo on breast pocket
- Hidden zipper
- Rubberized cuff

Embroidered or printed company logo or text available upon request!

Individual custom made ESD Clothing also available!

## AVAILABLE FABRICS AND COLOURS

### KK01 FABRIC



### TH55 FABRIC



### TH65 FABRIC



### TH96 FABRIC



### CR10 FABRIC



### CT35 FABRIC



## ORDERING CODE

**OJ - TH55 - RB L**  
 style fabric colour size

## SIZE CHART (cm)

OJ ESD Jacket	XS	S	M	L	XL	XXL	3XL	4XL	5XL
Sleeve	61	63	67	71	75	76	77	77	78
Length	63	65	67	69	71	73	75	76	77
Chest	90	98	106	114	122	130	136	142	148
Shoulder	40	43	46	49	52	55	58	61	65
Shoulder outline	56	58	60	62	64	66	68	70	72

Size tolerance (Before washing): 2%



Certified clothing according to the 2016 ESD standard. It's proved with the following tag.

# OLL ESD HOODIED COVERALL

## FEATURES

- Available sizes: unisex XS - 5XL
- ESD symbol on chest
- Conductive elasticated cuff
- Hidden zipper
- Adjustable legs with snap-fastener

Embroidered or printed company logo or text available upon request!

Individual custom made ESD Clothing also available!

## AVAILABLE FABRICS AND COLOURS

### KK01 FABRIC



### TH55 FABRIC



### TH65 FABRIC



### TH96 FABRIC



### CR10 FABRIC



### CT35 FABRIC



## ORDERING CODE

**OLL - CR10 - W L**  
 style fabric colour size



Certified clothing according to the 2016 ESD standard. It's proved with the following tag.

## SIZE CHART (cm)

OLL ESD Hoodied coverall	XS	S	M	L	XL	XXL	3XL	4XL	5XL
Length external from waist	104	106	108	110	112	114	116	118	120
Length from neck to waist	43	45	47	48	50	52	54	56	58
Sleeve	51	53	57	61	65	65	67	67	68
Chest	90	98	106	114	122	130	136	142	148
Shoulder	40	43	46	49	52	55	58	61	65

Size tolerance (Before washing): 2%



# HIV ESD HIGH VISIBILITY VEST

## FEATURES

- Available sizes: Unisex S-5XL
- With reflective stripes
- ESD symbol on chest
- Hidden snap-fasteners

Embroidered or printed company logo or text available upon request!

Individual custom made ESD Clothing also available!

## AVAILABLE FABRICS AND COLOURS

### KK01 FABRIC



## ORDERING CODE

**HIV** - **KK01** - **Y** **L**  
 style fabric colour size



Certified clothing according to the 2016 ESD standard. It's proved with the following tag.

### SIZE CHART (cm)

HIV ESD High Visibility vest	S	M	L	XL	XXL	3XL	4XL	5XL
<b>Chest</b>	114	118	122	126	130	134	138	142
<b>Length</b>	61	63	65	67	69	71	73	75

Size tolerance (Before washing): 2%



# BB ESD BASEBALL CAP



## FEATURES

- Sun visor
- Available sizes: Unisex, one size
- With ESD Symbol
- Rubberized back

Embroidered or printed company logo or text available upon request!

Individual custom made ESD Clothing also available!

## AVAILABLE FABRICS AND COLOURS

### KK01 FABRIC



### TH55 FABRIC



### TH65 FABRIC



### TH96 FABRIC



### CR10 FABRIC



### CT35 FABRIC



## ORDERING CODE

**BB** - **TH55** - **W**  
style fabric colour



Certified clothing according to the 2016 ESD standard. It's proved with the following tag.

# BP ESD CAP WITH NET

## FEATURES

- Breathable, net on the top of the cap
- Available sizes: Unisex, one size
- With ESD Symbol
- Plastic size adjuster on the back

Embossed or printed company logo or text available upon request!

Individual custom made ESD Clothing also available!

## AVAILABLE FABRICS AND COLOURS

### KK01 FABRIC



### TH55 FABRIC



### TH65 FABRIC



### TH96 FABRIC



### CR10 FABRIC



### CT35 FABRIC



## ORDERING CODE

**BP - TH55 - LB**  
 style fabric colour



Certified clothing according to the 2016 ESD standard. It's proved with the following tag.





# PREMIUM LINE



**PF1**

**... 40**

**PF1 ESD PREMIUM SMOCK**  
2/3 LENGTH



**PF2**

**... 42**

**PF2 ESD PREMIUM SMOCK**  
2/3 LENGTH



**PF3**

**... 44**

**PF3 ESD PREMIUM SMOCK**  
2/3 LENGTH



**PS1**

**... 41**

**PS1 ESD PREMIUM SMOCK**  
2/3 LENGTH



**PS2**

**... 43**

**PS2 ESD PREMIUM SMOCK**  
2/3 LENGTH



**PS3**

**... 45**

**PS3 ESD PREMIUM SMOCK**  
2/3 LENGTH

# PF1 ESD PREMIUM SMOCK

## 2/3 LENGTH

DESIGNED BY MS. *Gáspár Zsófia*

### FEATURES

- Available sizes: female XS - 5XL
- 2 side pockets
- Hidden snap-fasteners
- Cuff with snap-fasteners

Embroidered or printed company logo or text available upon request!

Individual custom made ESD Clothing also available!

### AVAILABLE FABRICS AND COLOURS

#### KK01 FABRIC



#### OPTIONAL

##### CONDUCTIVE ELASTICATED CUFF



CODE: RAN

##### WAIST KNITTER



CODE: OTO

##### GROUNDING SMOCK



CODE: GND

CHOOSE THE MOST MATCHING COLOUR COMBINATION OF YOUR COMPANY!



#### ORDERING CODE

**PF1 - KK01 - Y - DG L**  
 style fabric colour1 colour2 size



Certified clothing according to the 2016 ESD standard. It's proved with the following tag.

#### SIZE CHART (cm)

PF1 ESD Premium smock	XS	S	M	L	XL	XXL	3XL	4XL	5XL
Cuff	32	33	34	35	36	36	37	37	38
Sleeve	51	53	57	61	65	65	67	67	68
Length	89	91	93	95	99	101	103	105	107
Chest	90	98	106	114	122	130	136	142	148
Hip	90	98	106	114	122	130	136	142	148
Shoulder	40	43	46	49	52	55	58	61	65
Shoulder outline	56	58	60	62	64	66	68	70	72

Size tolerance (Before washing): 2%

# PS1 ESD PREMIUM SMOCK

2/3 LENGTH

DESIGNED BY Ms. *Gáspár Zsófia*

## FEATURES

- Available sizes: Male XS - 5XL
- 2 side pockets, 1 hidden breast pocket
- Hidden snap-fasteners
- Cuff with snap-fasteners

## OPTIONAL

CONDUCTIVE ELASTICATED CUFF



CODE: **RAN**

WAIST KNITTER



CODE: **OTO**

GROUNDING SMOCK



CODE: **GND**

Embroidered or printed company logo or text available upon request!

Individual custom made ESD Clothing also available!

CHOOSE THE MOST MATCHING COLOUR COMBINATION OF YOUR COMPANY!

## AVAILABLE FABRICS AND COLOURS

### KK01 FABRIC



### TH55 FABRIC



### ORDERING CODE

**PS1** - **KK01** - **Y** - **DG L**  
 style fabric colour1 colour2 size

### SIZE CHART (cm)

PS1 ESD Premium smock	XS	S	M	L	XL	XXL	3XL	4XL	5XL
Cuff	32	33	34	35	36	36	37	37	38
Sleeve	51	53	57	61	65	65	67	67	68
Length	89	91	93	95	99	101	103	105	107
Chest	90	98	106	114	122	130	136	142	148
Hip	90	98	106	114	122	130	136	142	148
Shoulder	40	43	46	49	52	55	58	61	65
Shoulder outline	56	58	60	62	64	66	68	70	72

Size tolerance (Before washing): 2%



Certified clothing according to the 2016 ESD standard. It's proved with the following tag.



# PF2 ESD PREMIUM SMOCK

## 2/3 LENGTH

DESIGNED BY Ms. *Vandornyzik Andrea*

### FEATURES

- Available sizes: female XS - 5XL
- 2 side pockets
- Hidden snap-fasteners
- Rubberized Cuff

Embroidered or printed company logo or text available upon request!

Individual custom made ESD Clothing also available!

### AVAILABLE FABRICS AND COLOURS

#### KK01 FABRIC



#### OPTIONAL

##### CONDUCTIVE ELASTICATED CUFF



CODE: RAN

##### WAIST KNITTER



CODE: OTO

##### GROUNDING SMOCK



CODE: GND

CHOOSE THE MOST MATCHING COLOUR COMBINATION OF YOUR COMPANY!



#### ORDERING CODE

**PF2 - KK01 - W - LB L**  
 style fabric colour1 colour2 size



Certified clothing according to the 2016 ESD standard. It's proved with the following tag.

#### SIZE CHART (cm)

PF2 ESD Premium smock	XS	S	M	L	XL	XXL	3XL	4XL	5XL
Cuff	32	33	34	35	36	36	37	37	38
Sleeve	51	53	57	61	65	65	67	67	68
Length	89	91	93	95	99	101	103	105	107
Chest	90	98	106	114	122	130	136	142	148
Hip	90	98	106	114	122	130	136	142	148
Shoulder	40	43	46	49	52	55	58	61	65
Shoulder outline	56	58	60	62	64	66	68	70	72

Size tolerance (Before washing): 2%



# PS2 ESD PREMIUM SMOCK

2/3 LENGTH

DESIGNED BY Ms. *Vandornyzik Andrea*

## FEATURES

- Available sizes: Male XS - 5XL
- 2 side pockets
- Hidden snap-fasteners
- Rubberized cuff

Embroidered or printed company logo or text available upon request!

Individual custom made ESD Clothing also available!

## OPTIONAL

CONDUCTIVE ELASTICATED CUFF



CODE: **RAN**

WAIST KNITTER



CODE: **OTO**

GROUNDING SMOCK



CODE: **GND**

CHOOSE THE MOST MATCHING COLOUR COMBINATION OF YOUR COMPANY!

## AVAILABLE FABRICS AND COLOURS

### KK01 FABRIC



### TH55 FABRIC



## ORDERING CODE

**PS2** - **KK01** - **W** - **LB** **L**  
 style fabric colour1 colour2 size

## SIZE CHART (cm)

PS2 ESD Premium smock	XS	S	M	L	XL	XXL	3XL	4XL	5XL
Cuff	32	33	34	35	36	36	37	37	38
Sleeve	51	53	57	61	65	65	67	67	68
Length	89	91	93	95	99	101	103	105	107
Chest	90	98	106	114	122	130	136	142	148
Hip	90	98	106	114	122	130	136	142	148
Shoulder	40	43	46	49	52	55	58	61	65
Shoulder outline	56	58	60	62	64	66	68	70	72

Size tolerance (Before washing): 2%



Certified clothing according to the 2016 ESD standard. It's proved with the following tag.

# PF3 ESD PREMIUM SMOCK

## 2/3 LENGTH

DESIGNED BY Ms. *Kevies Berbala*

### FEATURES

- Available sizes: female XS - 5XL
- 2 side pocketsts
- Hidden snap-fasteners
- Cuff with snap-fasteners

Embroidered or printed company logo or text available upon request!

Individual custom made ESD Clothing also available!

### AVAILABLE FABRICS AND COLOURS

#### KK01 FABRIC



#### TH55 FABRIC



### ORDERING CODE

**PF3 - KK01 - LB - LG L**  
 style fabric colour1 colour2 size



Certified clothing according to the 2016 ESD standard. It's proved with the following tag.

### OPTIONAL

#### CONDUCTIVE ELASTICATED CUFF



CODE: RAN

#### WAIST KNITTER



CODE: OTO

#### GROUNDING SMOCK



CODE: GND

CHOOSE THE MOST MATCHING COLOUR COMBINATION OF YOUR COMPANY!



### SIZE CHART (cm)

PF3 ESD Premium smock	XS	S	M	L	XL	XXL	3XL	4XL	5XL
Cuff	32	33	34	35	36	36	37	37	38
Sleeve	51	53	57	61	65	65	67	67	68
Length	89	91	93	95	99	101	103	105	107
Chest	90	98	106	114	122	130	136	142	148
Hip	90	98	106	114	122	130	136	142	148
Shoulder	40	43	46	49	52	55	58	61	65
Shoulder outline	56	58	60	62	64	66	68	70	72

Size tolerance (Before washing): 2%

# PS3 ESD PREMIUM SMOCK

2/3 LENGTH

DESIGNED BY MS. *Kovacs Barbala*

## FEATURES

- Available sizes: Male XS - 5XL
- 2 side pockets
- Hidden snap-fasteners
- Cuff with snap-fasteners

Embroidered or printed company logo or text available upon request!

Individual custom made ESD Clothing also available!

## AVAILABLE FABRICS AND COLOURS

### KK01 FABRIC



### TH55 FABRIC



### ORDERING CODE

**PS3** - **KK01** - **LB** - **LG** **L**  
 style fabric colour1 colour2 size



Certified clothing according to the 2016 ESD standard. It's proved with the following tag.

### OPTIONAL

#### CONDUCTIVE ELASTICATED CUFF



CODE: **RAN**

#### WAIST KNITTER



CODE: **OTO**

#### GROUNDING SMOCK



CODE: **GND**

CHOOSE THE MOST MATCHING COLOUR COMBINATION OF YOUR COMPANY!



### SIZE CHART (cm)

PS3 ESD Premium smock	XS	S	M	L	XL	XXL	3XL	4XL	5XL
Cuff	32	33	34	35	36	36	37	37	38
Sleeve	51	53	57	61	65	65	67	67	68
Length	89	91	93	95	99	101	103	105	107
Chest	90	98	106	114	122	130	136	142	148
Hip	90	98	106	114	122	130	136	142	148
Shoulder	40	43	46	49	52	55	58	61	65
Shoulder outline	56	58	60	62	64	66	68	70	72

Size tolerance (Before washing): 2%



# BUSINESS LINE





**ING**

**... 48**

**ING** ESD MALE OXFORD SHIRT



**IFG**

**... 49**

**IFG** ESD OXFORD SHIRT



**NT**

**... 50**

**NT** ESD MALE SUITE PANTS



**NTF**

**... 51**

**NTF** ESD FEMALE SUITE PANTS

# ING ESD MALE OXFORD SHIRT



## FEATURES

- Business style
- Available sizes: Male XS - 5XL
- 1 breast pocket
- ESD symbol on sleeve
- With buttons

- Embroidered or printed company logo or text available upon request!
- Individual custom made ESD Clothing also available!

## AVAILABLE FABRICS AND COLOURS

### KK01 FABRIC



### TH55 FABRIC



### TH65 FABRIC



### TH96 FABRIC



### CR10 FABRIC



### CT35 FABRIC



## ORDERING CODE

**ING - KK01 - W L**  
 style fabric colour size



Certified clothing according to the 2016 ESD standard. It's proved with the following tag.

## SIZE CHART (cm)

ING ESD Male Oxford shirt	XS	S	M	L	XL	XXL	3XL	4XL	5XL
Sleeve	56	58	60	62	64	66	68	70	70
Length	66	68	70	72	74	76	78	80	80
Chest	94	100	106	112	118	124	130	136	142
Shoulder	39	41	43	45	47	49	51	54	57
Cuff outline	23	24	25	26	27	28	29	30	31

Size tolerance (Before washing): 2%

# IFG ESD OXFORD SHIRT

## FEATURES

- Available sizes: female XS - 5XL
- ESD symbol on sleeve
- With buttons

Embroidered or printed company logo or text available upon request!

Individual custom made ESD Clothing also available!

## AVAILABLE FABRICS AND COLOURS

### KK01 FABRIC



### TH55 FABRIC



### TH65 FABRIC



### TH96 FABRIC



### CR10 FABRIC



### CT35 FABRIC



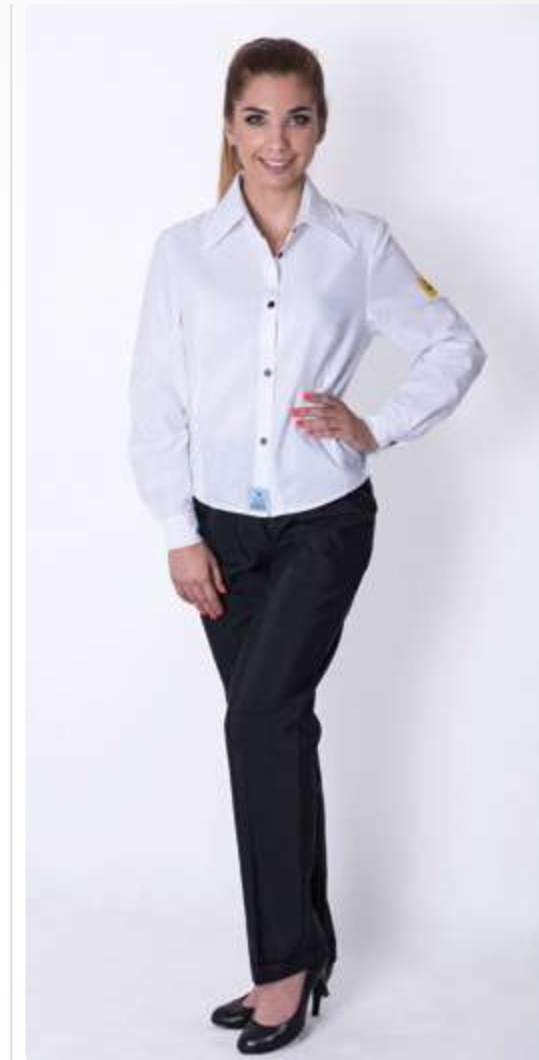
## ORDERING CODE

**IFG** - **KK01** - **W** **L**  
 style fabric colour size

## SIZE CHART (cm)

IFG ESD Oxford shirt	XS	S	M	L	XL	XXL	3XL	4XL	5XL
Sleeve	56	58	60	62	64	66	68	70	70
Length	56	58	60	62	64	66	68	70	70
Chest	84	88	92	96	100	104	108	112	116
Shoulder	40	40	42	44	46	48	50	52	54
Cuff outline	21	22	23	24	25	26	27	28	29

Size tolerance (Before washing): 2%



Certified clothing according to the 2016 ESD standard. It's proved with the following tag.

# NT ESD MALE SUITE PANTS

## FEATURES

- Straight style
- Available sizes: Male XS - 5XL
- 2 side pocket, 1 hip pocket with ESD symbol

Embroidered or printed company logo or text available upon request!

Individual custom made ESD Clothing also available!

## AVAILABLE FABRICS AND COLOURS

### KK01 FABRIC



### TH55 FABRIC



### TH65 FABRIC



### TH96 FABRIC



### CR10 FABRIC



### CT35 FABRIC



## ORDERING CODE

**NT** - **KK01** - **BK** **L**  
 style fabric colour size



Certified clothing according to the 2016 ESD standard. It's proved with the following tag.



## SIZE CHART (cm)

NT ESD Male suite pants	XS	S	M	L	XL	XXL	3XL	4XL	5XL
Waist	80	84	88	92	96	100	104	109	113
Hip	98	102	107	111	115	119	123	128	132
Length external	102	104	106	108	110	112	114	116	118

Size tolerance (Before washing): 2%



# NTF ESD FEMALE SUITE PANTS

## FEATURES

- Available sizes: female XS - 5XL
- 2 side pockets
- With ESD Symbol

Embroidered or printed company logo or text available upon request!

Individual custom made ESD Clothing also available!

## AVAILABLE FABRICS AND COLOURS

### KK01 FABRIC



### TH55 FABRIC



### TH65 FABRIC



### TH96 FABRIC



### CR10 FABRIC



### CT35 FABRIC



## ORDERING CODE

**NTF** - **KK01** - **BK** **L**  
 style fabric colour size

### SIZE CHART (cm)

NTF ESD Female suite pants	XS	S	M	L	XL	XXL	3XL	4XL	5XL
Waist	68	72	76	80	84	88	92	97	101
Hip	98	102	107	111	115	119	123	128	132
Length external	102	104	106	108	110	112	114	116	118

Size tolerance (Before washing): 2%



Certified clothing according to the 2016 ESD standard. It's proved with the following tag.



# SUMMER LINE



**TKO**

... **54**

**TKO ESD T-SHIRT**

WITH SHORT SLEEVE, ROUND NECK, NO POCKET



**TKZ**

... **55**

**TKZ ESD T-SHIRT**

WITH SHORT SLEEVE, ROUND NECK, WITH POCKET



**LKO**

... **56**

**LKO ESD T-SHIRT**

WITH LONG SLEEVE, ROUND NECK, NO POCKET



**LKZ**

... **57**

**LKZ ESD T-SHIRT**

WITH LONG SLEEVE, ROUND NECK, WITH POCKET



**TGO**

... **58**

**TGO ESD T-SHIRT**

WITH SHORT SLEEVE, V-NECK, NO POCKET



**TGZ**

... **59**

**TGZ ESD T-SHIRT**

WITH SHORT SLEEVE, V-NECK, WITH POCKET



**LGO**

... **60**

**LGO ESD T-SHIRT**

WITH LONG SLEEVE, V-NECK, NO POCKET



**LGZ**

... **61**

**LGZ ESD T-SHIRT**

WITH LONG SLEEVE, V-NECK, WITH POCKET



**PGO**

... **62**

**PGO ESD POLO-SHIRT**

WITH SHORT SLEEVE, NO POCKET



**PGZ**

... **63**

**PGZ ESD POLO-SHIRT**

WITH SHORT SLEEVE, WITH POCKET



**QGO**

... **64**

**QGO ESD POLO-SHIRT**

WITH LONG SLEEVE, NO POCKET



**QGZ**

... **65**

**QGZ ESD POLO-SHIRT**

WITH LONG SLEEVE, WITH POCKET



**TLY**

... **66**

**TLY ESD STRETCH T-SHIRT**

WITH SHORT SLEEVE, ROUND NECK



**RGA**

... **67**

**RGA ESD SHORTS**

# TKO ESD T-SHIRT

WITH SHORT SLEEVE, ROUND NECK, NO POCKET

## FEATURES

- Round neck
- Available sizes: unisex XS - 5XL
- Without any pocket
- ESD symbol on sleeve

Embroidered or printed company logo or text available upon request!

Individual custom made ESD Clothing also available!

## AVAILABLE FABRICS AND COLOURS

### TS15 FABRIC



### TS16 FABRIC



### PS21 FABRIC



## ORDERING CODE

**TKO - TS15 - W L**  
 style fabric colour size

## SIZE CHART (cm)

TKO ESD T-Shirt	XS	S	M	L	XL	XXL	3XL	4XL	5XL
Sleeve	20,5	21,5	22,5	23,5	25	26,5	28	29,5	31
Length	63	66	69	72	75	78	81	84	87
Chest	100	106	112	118	124	130	136	142	148
Shoulder	41	43	45	47	49	51	54	57	60

Size tolerance (Before washing): 2%



Certified clothing according to the 2016 ESD standard. It's proved with the following tag.

**! THE GIVEN SIZES ARE BEFORE WASHING. AFTER WASHING THERE CAN BE 8-10 % SHRINKING OF THE WIDTH (ESPECIALLY THE CHEST)!!!**



# TKZ ESD T-SHIRT

WITH SHORT SLEEVE, ROUND NECK, WITH POCKET

## FEATURES

- ▶ Round neck
- ▶ Available sizes: unisex XS - 5XL
- ▶ Breast pocket with ESD symbol

Embroidered or printed company logo or text available upon request!

Individual custom made ESD Clothing also available!

## AVAILABLE FABRICS AND COLOURS

### TS15 FABRIC



### TS16 FABRIC



### PS21 FABRIC



## ORDERING CODE

**TKZ - TS15 - GA L**  
 style fabric colour size

## SIZE CHART (cm)

TKZ ESD T-Shirt	XS	S	M	L	XL	XXL	3XL	4XL	5XL
Sleeve	20,5	21,5	22,5	23,5	25	26,5	28	29,5	31
Length	63	66	69	72	75	78	81	84	87
Chest	100	106	112	118	124	130	136	142	148
Shoulder	41	43	45	47	49	51	54	57	60

Size tolerance (Before washing): 2%

THE GIVEN SIZES ARE BEFORE WASHING.  
 AFTER WASHING THERE CAN BE 8-10 % SHRINKING OF THE WIDTH (ESPECIALLY THE CHEST)!!!



Certified clothing according to the 2016 ESD standard. It's proved with the following tag.

# LKO ESD T-SHIRT

WITH LONG SLEEVE, ROUND NECK, NO POCKET

## FEATURES

- Round neck
- Available sizes: unisex XS - 5XL
- Without any pocket
- ESD symbol on sleeve

Embroidered or printed company logo or text available upon request!

Individual custom made ESD Clothing also available!

## AVAILABLE FABRICS AND COLOURS

### TS15 FABRIC



### TS16 FABRIC



### PS21 FABRIC



## ORDERING CODE

**LKO - TS15 - RB L**  
 style fabric colour size

## SIZE CHART (cm)

LKO ESD T-Shirt	XS	S	M	L	XL	XXL	3XL	4XL	5XL
Sleeve	51,5	53	57	61	63	65	67	67	68
Length	63	66	69	72	75	78	81	84	87
Chest	100	106	112	118	124	130	136	142	148
Shoulder	41	43	45	47	49	51	54	57	60

Size tolerance (Before washing): 2%



Certified clothing according to the 2016 ESD standard. It's proved with the following tag.

**THE GIVEN SIZES ARE BEFORE WASHING. AFTER WASHING THERE CAN BE 8-10 % SHRINKING OF THE WIDTH (ESPECIALLY THE CHEST)!!!**

# LKZ ESD T-SHIRT

WITH LONG SLEEVE, ROUND NECK, WITH POCKET

## FEATURES

- ▶ Round neck
- ▶ Available sizes: unisex XS - 5XL
- ▶ Breast pocket with ESD symbol

Embroidered or printed company logo or text available upon request!

Individual custom made ESD Clothing also available!

## AVAILABLE FABRICS AND COLOURS

### TS15 FABRIC



### TS16 FABRIC



### PS21 FABRIC



## ORDERING CODE

**LKZ - TS15 - BK L**  
 style fabric colour size

## SIZE CHART (cm)

LKZ ESD T-Shirt	XS	S	M	L	XL	XXL	3XL	4XL	5XL
Sleeve	51,5	53	57	61	63	65	67	67	68
Length	63	66	69	72	75	78	81	84	87
Chest	100	106	112	118	124	130	136	142	148
Shoulder	41	43	45	47	49	51	54	57	60

Size tolerance (Before washing): 2%

THE GIVEN SIZES ARE BEFORE WASHING.  
 AFTER WASHING THERE CAN BE 8-10 % SHRINKING OF THE WIDTH (ESPECIALLY THE CHEST)!!!



Certified clothing according to the 2016 ESD standard. It's proved with the following tag.

# TGO ESD T-SHIRT

WITH SHORT SLEEVE, V-NECK, NO POCKET

## FEATURES

- V-neck
- Available sizes: unisex XS - 5XL
- Without any pocket
- ESD symbol on sleeve

Embroidered or printed company logo or text available upon request!

Individual custom made ESD Clothing also available!

## AVAILABLE FABRICS AND COLOURS

### TS15 FABRIC



### TS16 FABRIC



### PS21 FABRIC



## ORDERING CODE

**TGO - TS15 - W L**  
 style fabric colour size

## SIZE CHART (cm)

TGO ESD T-Shirt	XS	S	M	L	XL	XXL	3XL	4XL	5XL
Sleeve	20,5	21,5	22,5	23,5	25	26,5	28	29,5	31
Length	63	66	69	72	75	78	81	84	87
Chest	100	106	112	118	124	130	136	142	148
Shoulder	41	43	45	47	49	51	54	57	60

Size tolerance (Before washing): 2%



Certified clothing according to the 2016 ESD standard. It's proved with the following tag.

**! THE GIVEN SIZES ARE BEFORE WASHING. AFTER WASHING THERE CAN BE 8-10 % SHRINKING OF THE WIDTH (ESPECIALLY THE CHEST)!!!**



# TGZ ESD T-SHIRT

WITH SHORT SLEEVE, V-NECK, WITH POCKET

## FEATURES

- V-neck
- Available sizes: unisex XS - 5XL
- Breast pocket with ESD symbol

Embroidered or printed company logo or text available upon request!

Individual custom made ESD Clothing also available!

## AVAILABLE FABRICS AND COLOURS

### TS15 FABRIC



### TS16 FABRIC



### PS21 FABRIC



## ORDERING CODE

**TGZ - TS15 - GA L**  
 style fabric colour size

## SIZE CHART (cm)

TGZ ESD T-Shirt	XS	S	M	L	XL	XXL	3XL	4XL	5XL
Sleeve	20,5	21,5	22,5	23,5	25	26,5	28	29,5	31
Length	63	66	69	72	75	78	81	84	87
Chest	100	106	112	118	124	130	136	142	148
Shoulder	41	43	45	47	49	51	54	57	60

Size tolerance (Before washing): 2%

THE GIVEN SIZES ARE BEFORE WASHING.  
 AFTER WASHING THERE CAN BE 8-10 % SHRINKING OF THE WIDTH (ESPECIALLY THE CHEST)!!!



Certified clothing according to the 2016 ESD standard. It's proved with the following tag.



# LGO ESD T-SHIRT

WITH LONG SLEEVE, V-NECK, NO POCKET

## FEATURES

- V-neck
- Available sizes: unisex XS - 5XL
- Without any pocket
- ESD symbol on sleeve

- Embroidered or printed company logo or text available upon request!
- Individual custom made ESD Clothing also available!

## AVAILABLE FABRICS AND COLOURS

### TS15 FABRIC



### TS16 FABRIC



### PS21 FABRIC



## ORDERING CODE

**LGO - TS15 - RB L**  
 style fabric colour size

## SIZE CHART (cm)

LGO ESD T-Shirt	XS	S	M	L	XL	XXL	3XL	4XL	5XL
Sleeve	51,5	53	57	61	63	65	67	67	68
Length	63	66	69	72	75	78	81	84	87
Chest	100	106	112	118	124	130	136	142	148
Shoulder	41	43	45	47	49	51	54	57	60

Size tolerance (Before washing): 2%



Certified clothing according to the 2016 ESD standard. It's proved with the following tag.

**! THE GIVEN SIZES ARE BEFORE WASHING. AFTER WASHING THERE CAN BE 8-10 % SHRINKING OF THE WIDTH (ESPECIALLY THE CHEST)!!!**

# LGZ ESD T-SHIRT

WITH LONG SLEEVE, V-NECK, WITH POCKET

## FEATURES

- V-neck
- Available sizes: unisex XS - 5XL
- Breast pocket with ESD symbol

Embroidered or printed company logo or text available upon request!

Individual custom made ESD Clothing also available!

## AVAILABLE FABRICS AND COLOURS

### TS15 FABRIC



### TS16 FABRIC



### PS21 FABRIC



## ORDERING CODE

**LGZ - TS15 - BK L**  
 style fabric colour size

## SIZE CHART (cm)

LKZ ESD T-Shirt	XS	S	M	L	XL	XXL	3XL	4XL	5XL
Sleeve	51,5	53	57	61	63	65	67	67	68
Length	63	66	69	72	75	78	81	84	87
Chest	100	106	112	118	124	130	136	142	148
Shoulder	41	43	45	47	49	51	54	57	60

Size tolerance (Before washing): 2%

THE GIVEN SIZES ARE BEFORE WASHING.  
 AFTER WASHING THERE CAN BE 8-10 % SHRINKING OF THE WIDTH (ESPECIALLY THE CHEST)!!!



Certified clothing according to the 2016 ESD standard. It's proved with the following tag.

# PGO ESD POLO-SHIRT

WITH SHORT SLEEVE, NO POCKET



## FEATURES

- Available sizes: unisex XS - 5XL
- Without any pocket
- ESD symbol on sleeve
- Hidden snap-fasteners

## OPTIONAL

- + Collar from its own fabric – Code: **SAA**

- Embroidered or printed company logo or text available upon request!
- Individual custom made ESD Clothing also available!

## AVAILABLE FABRICS AND COLOURS

### TS15 FABRIC



### TS16 FABRIC



### PS21 FABRIC



## ORDERING CODE

**PGO** - **PS21** - **GA** **L**  
 style fabric colour size

## SIZE CHART (cm)

PGO ESD POLO-Shirt	XS	S	M	L	XL	XXL	3XL	4XL	5XL
Sleeve	20,5	21,5	22,5	23,5	25	26,5	28	29,5	31
Length	63	66	69	72	75	78	81	84	87
Chest	100	106	112	118	124	130	136	142	148
Shoulder	41	43	45	47	49	51	54	57	60

Size tolerance (Before washing): 2%



Certified clothing according to the 2016 ESD standard. It's proved with the following tag.

**! THE GIVEN SIZES ARE BEFORE WASHING. AFTER WASHING THERE CAN BE 8-10 % SHRINKING OF THE WIDTH (ESPECIALLY THE CHEST)!!!**

# PGZ ESD POLO-SHIRT

WITH LONG SLEEVE, WITH POCKET

## FEATURES

- Available sizes: unisex XS - 5XL
- Breast pocket with ESD symbol
- Hidden snap-fasteners

## OPTIONAL

- ⊕ Collar from its own fabric – Code: **SAA**

Embroidered or printed company logo or text available upon request!

Individual custom made ESD Clothing also available!

## AVAILABLE FABRICS AND COLOURS

### TS15 FABRIC



### TS16 FABRIC



### PS21 FABRIC



## ORDERING CODE

**PGZ - TS16 - W L**  
 style fabric colour size

## SIZE CHART (cm)

PGZ ESD POLO-Shirt	XS	S	M	L	XL	XXL	3XL	4XL	5XL
Sleeve	20,5	21,5	22,5	23,5	25	26,5	28	29,5	31
Length	63	66	69	72	75	78	81	84	87
Chest	100	106	112	118	124	130	136	142	148
Shoulder	41	43	45	47	49	51	54	57	60

Size tolerance (Before washing): 2%

THE GIVEN SIZES ARE BEFORE WASHING.  
 AFTER WASHING THERE CAN BE 8-10 % SHRINKING OF THE WIDTH (ESPECIALLY THE CHEST)!!!



Certified clothing according to the 2016 ESD standard. It's proved with the following tag.



# QGO ESD POLO-SHIRT

WITH LONG SLEEVE, NO POCKET

## FEATURES

- Available sizes: unisex XS - 5XL
- Without any pocket
- ESD symbol on sleeve
- Hidden snap-fasteners

## OPTIONAL

- Collar from its own fabric – Code: **SAA**

Embroidered or printed company logo or text available upon request!

Individual custom made ESD Clothing also available!

## AVAILABLE FABRICS AND COLOURS

### TS15 FABRIC



### TS16 FABRIC



### PS21 FABRIC



## ORDERING CODE

**QGO - PS21 - RB L**  
 style fabric colour size

## SIZE CHART (cm)

QGO ESD POLO-Shirt	XS	S	M	L	XL	XXL	3XL	4XL	5XL
Sleeve	51,5	53	57	61	63	65	67	67	68
Length	63	66	69	72	75	78	81	84	87
Chest	100	106	112	118	124	130	136	142	148
Shoulder	41	43	45	47	49	51	54	57	60

Size tolerance (Before washing): 2%



Certified clothing according to the 2016 ESD standard. It's proved with the following tag.

**THE GIVEN SIZES ARE BEFORE WASHING. AFTER WASHING THERE CAN BE 8-10 % SHRINKING OF THE WIDTH (ESPECIALLY THE CHEST)!!!**

# QGZ ESD POLO-SHIRT

WITH LONG SLEEVE, WITH POCKET

## FEATURES

- Available sizes: unisex XS - 5XL
- Breast pocket with ESD symbol
- Hidden snap-fasteners

## OPTIONAL

- ⊕ Collar from its own fabric – Code: **SAA**

Embroidered or printed company logo or text available upon request!

Individual custom made ESD Clothing also available!

## AVAILABLE FABRICS AND COLOURS

### TS15 FABRIC



### TS16 FABRIC



### PS21 FABRIC



## ORDERING CODE

**QGZ** - **TS16** - **NB** **L**  
 style fabric colour size

## SIZE CHART (cm)

QGZ ESD POLO-Shirt	XS	S	M	L	XL	XXL	3XL	4XL	5XL
Sleeve	51,5	53	57	61	63	65	67	67	68
Length	63	66	69	72	75	78	81	84	87
Chest	100	106	112	118	124	130	136	142	148
Shoulder	41	43	45	47	49	51	54	57	60

Size tolerance (Before washing): 2%

THE GIVEN SIZES ARE BEFORE WASHING.  
 AFTER WASHING THERE CAN BE 8-10 % SHRINKING OF THE WIDTH (ESPECIALLY THE CHEST)!!!



Certified clothing according to the 2016 ESD standard. It's proved with the following tag.

# TLY ESD STRETCH T-SHIRT

WITH ROUND NECK, SHORT SLEEVE

## FEATURES

- Skinny style, stretch material
- Round neck
- Short sleeve
- Available sizes: unisex XS - 5XL
- Without any pocket
- ESD symbol on sleeve
- Comfortable, breathable

Embroidered or printed company logo or text available upon request!

Individual custom made ESD Clothing also available!

## AVAILABLE FABRICS AND COLOURS

### LY20 FABRIC



### ORDERING CODE

**TLY - LY20 - BK L**  
 style fabric colour size

### SIZE CHART (cm)

TLY ESD Stretch T-Shirt	XS	S	M	L	XL	XXL	3XL	4XL	5XL
Sleeve	19,5	20,5	21,5	22,5	23,5	25	26,5	28	29,5
Length	56	59	62	65	68	71	74	77	80
Chest	94	100	106	112	118	124	130	136	142
Shoulder	39	41	43	45	47	49	51	54	57

Size tolerance (Before washing): 2%



Certified clothing according to the 2016 ESD standard. It's proved with the following tag.

# RGAs ESD SHORTS

### FEATURES

- Straight style
- Available sizes: Male XS - 5XL
- 2 side pockets, 1 hip pocket with ESD symbol
- 1 side pocket on the leg
- 1 tool pocket on the leg
- Rubberized waist with snap-fastener

Embroidered or printed company logo or text available upon request!

Individual custom made ESD Clothing also available!

### AVAILABLE FABRICS AND COLOURS

#### KK01 FABRIC



#### TH55 FABRIC



#### TH65 FABRIC



#### TH96 FABRIC



#### CR10 FABRIC



#### CT35 FABRIC



### ORDERING CODE

**RGAs - KK01 - DG L**  
 style fabric colour size



Certified clothing according to the 2016 ESD standard. It's proved with the following tag.

### SIZE CHART (cm)

RGAs ESD Shorts	XS	S	M	L	XL	XXL	3XL	4XL	5XL
Length external	49	51	53	55	57	59	61	63	65
Hip	98	102	107	111	115	119	123	128	132

Size tolerance (Before washing): 2%



# WINTER LINE





CAS

... 70

CAS ESD CARDIGAN  
WITH SHORT ZIPPER



CAL

... 71

CAL ESD CARDIGAN  
WITH LONG ZIPPER



SWS

... 72

SWS ESD SWEATSHIRT  
WITH ROUND NECK



SGS

... 73

SGS ESD SWEATSHIRT  
WITH V-NECK



SGW

... 74

SGW ESD VEST  
WITH ROUND NECK



SWW

... 75

SWW ESD VEST  
WITH V-NECK



WJ

... 76

WJ ESD WINTER  
JACKET



WW

... 77

WW ESD WINTER VEST



WN

... 78

WN ESD WINTER  
TROUSERS WITH BRIDLES



SKS

... 79

SKS ESD HOODED  
SWEATSHIRT



VES-S

... 80

VES-S ESD QUILTED  
VEST



VES-H

... 81

VES-H ESD QUILTED VEST  
WITH ZIPPER



WH

... 82

WH ESD WINTER HAT



WS

... 83

WS ESD TUBE SCARF

# CAS ESD CARDIGAN

## WITH SHORT ZIPPER

### FEATURES

- Available sizes: unisex XS - 5XL
- With short zipper
- 2 side pockets
- ESD symbol on chest
- ESD Cuff
- Comfortable, breathable

Embroidered or printed company logo or text available upon request!

Individual custom made ESD Clothing also available!

## AVAILABLE FABRICS AND COLOURS

### THSS FABRIC



### THSB FABRIC



### ORDERING CODE

**CAS - THSS - NB L**  
 style fabric colour size



Certified clothing according to the 2016 ESD standard. It's proved with the following tag.

### SIZE CHART (cm)

CAS ESD Cardigan	XS	S	M	L	XL	XXL	3XL	4XL	5XL
Chest	108	112	116	120	124	130	136	142	148
Length	66	68	70	72	74	76	78	80	82
Sleeve	72	74	76	78	80	82	84	84	85

Size tolerance (Before washing): 2%

# CAL ESD CARDIGAN

## WITH LONG ZIPPER

### FEATURES

- Available sizes: unisex XS - 5XL
- With full length zipper
- 2 side pockets
- ESD symbol on chest
- ESD Cuff
- Comfortable, breathable

Embroidered or printed company logo or text available upon request!

Individual custom made ESD Clothing also available!

## AVAILABLE FABRICS AND COLOURS

### THSS FABRIC



### THSB FABRIC



### ORDERING CODE

**CAL** - **THSS** - **NB L**  
 style fabric colour size



Certified clothing according to the 2016 ESD standard. It's proved with the following tag.

### SIZE CHART (cm)

CAL ESD Cardigan	XS	S	M	L	XL	XXL	3XL	4XL	5XL
Chest	108	112	114	120	124	130	136	142	148
Length	64	66	68	70	72	74	76	78	80
Sleeve	70	72	74	76	78	80	82	82	83

Size tolerance (Before washing): 2%



# SWS ESD SWEATSHIRT

## WITH ROUND NECK

### FEATURES

- Available sizes: unisex XS - 5XL
- Round neck
- ESD symbol on chest
- ESD Cuff

Embroidered or printed company logo or text available upon request!

Individual custom made ESD Clothing also available!

## AVAILABLE FABRICS AND COLOURS

### THSS FABRIC



### THSB FABRIC



### ORDERING CODE

**SWS - THSS - NB L**  
 style fabric colour size



Certified clothing according to the 2016 ESD standard. It's proved with the following tag.

### SIZE CHART (cm)

SWS ESD Sweatshirt	XS	S	M	L	XL	XXL	3XL	4XL	5XL
Chest	108	112	116	120	124	130	136	142	148
Length	66	68	70	72	74	76	78	80	82
Sleeve	72	74	76	78	80	82	84	84	85

Size tolerance (Before washing): 2%

# SGS ESD SWEATSHIRT

## WITH V-NECK

### FEATURES

- Available sizes: unisex XS - 5XL
- V-neck
- ESD symbol on chest
- ESD Cuff

Embroidered or printed company logo or text available upon request!

Individual custom made ESD Clothing also available!

## AVAILABLE FABRICS AND COLOURS

### THSS FABRIC



### THSB FABRIC



### ORDERING CODE

**SGS - THSS - NB L**  
 style fabric colour size



Certified clothing according to the 2016 ESD standard. It's proved with the following tag.

### SIZE CHART (cm)

SGS ESD Sweatshirt	XS	S	M	L	XL	XXL	3XL	4XL	5XL
Chest	108	112	116	120	124	130	136	142	148
Length	66	68	70	72	74	76	78	80	82
Sleeve	72	74	76	78	80	82	84	84	85

Size tolerance (Before washing): 2%





# SGW ESD VEST

## WITH ROUND NECK

### FEATURES

- Available sizes: unisex XS - 5XL
- Round neck
- ESD symbol on chest

Embroidered or printed company logo or text available upon request!

Individual custom made ESD Clothing also available!

## AVAILABLE FABRICS AND COLOURS

### THSS FABRIC



### THSB FABRIC



### ORDERING CODE

**SGW - THSS - NB L**  
 style fabric colour size



Certified clothing according to the 2016 ESD standard. It's proved with the following tag.

### SIZE CHART (cm)

SGW ESD Vest	XS	S	M	L	XL	XXL	3XL	4XL	5XL
Chest	100	106	112	118	124	130	136	142	148
Length	63	66	69	72	75	78	81	84	87
Shoulder	41	43	45	47	49	51	54	57	60

Size tolerance (Before washing): 2%

# SWW ESD VEST

## V-NECK

### FEATURES

- Available sizes: unisex XS - 5XL
- V-neck
- ESD symbol on chest

Embroidered or printed company logo or text available upon request!

Individual custom made ESD Clothing also available!

## AVAILABLE FABRICS AND COLOURS

### THSS FABRIC



### THSB FABRIC



### ORDERING CODE

**SWW - THSS - NB L**  
 style fabric colour size



Certified clothing according to the 2016 ESD standard. It's proved with the following tag.

### SIZE CHART (cm)

SWW ESD Vest	XS	S	M	L	XL	XXL	3XL	4XL	5XL
Chest	100	106	112	118	124	130	136	142	148
Length	63	66	69	72	75	78	81	84	87
Shoulder	41	43	45	47	49	51	54	57	60

Size tolerance (Before washing): 2%



# WJ ESD WINTER JACKET

## FEATURES

- Available sizes: unisex XS - 5XL
- Wool inlining
- Water-repellent outer layer
- ESD symbol on chest
- 2 side pockets
- Hidden zipper

Embroidered or printed company logo or text available upon request!

Individual custom made ESD Clothing also available!

## AVAILABLE FABRICS AND COLOURS

### WC10 FABRIC



### ORDERING CODE

**WJ - WC10 - NB L**  
 style fabric colour size



Certified clothing according to the 2016 ESD standard. It's proved with the following tag.

### SIZE CHART (cm)

WJ ESD Winter jacket	XS	S	M	L	XL	XXL	3XL	4XL	5XL
Chest	130	132	136	140	144	150	154	158	162
Sleeve	62	63	64	65	68	68	69	69	70
Length	70	71	72	73	74	75	76	77	78

Size tolerance (Before washing): 2%

# WW ESD WINTER VEST

## FEATURES

- Available sizes: unisex XS - 5XL
- Wool inlining
- Water-repellent outer layer
- ESD symbol on chest
- 2 side pockets
- Hidden zipper

Embroidered or printed company logo or text available upon request!

Individual custom made ESD Clothing also available!

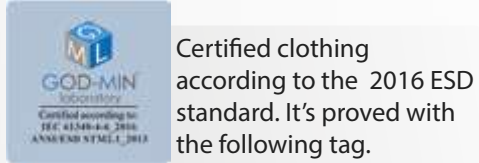
## AVAILABLE FABRICS AND COLOURS

### WC10 FABRIC



## ORDERING CODE

**WW** - **WC10** - **NB** **L**  
 style fabric colour size



### SIZE CHART (cm)

WW ESD Winter vest	XS	S	M	L	XL	XXL	3XL	4XL	5XL
Chest	130	132	136	140	144	150	154	158	162
Length	70	71	72	73	74	75	76	77	78

Size tolerance (Before washing): 2%



# WN ESD WINTER TROUSERS WITH BRIDLES



## FEATURES

- Inlined
- Available sizes: unisex XS - 5XL
- Water-repellent outer layer
- 2 side pockets, 1 breast pocket with ESD symbol
- 2 side pocket on legs
- 2 quick release buckles

- ! Embroidered or printed company logo or text available upon request!
- Individual custom made ESD Clothing also available!

## AVAILABLE FABRICS AND COLOURS

### WC10 FABRIC



### ORDERING CODE

**WN - WC10 - NB L**  
 style fabric colour size



Certified clothing according to the 2016 ESD standard. It's proved with the following tag.

### SIZE CHART (cm)

WN ESD Winter trousers	XS	S	M	L	XL	XXL	3XL	4XL	5XL
Length external	104	106	108	110	112	114	116	118	119
Hip	102	107	111	115	119	123	128	132	136
Bridle length	62	63	64	64	66	66	68	68	70

Size tolerance (Before washing): 2%



# SKS ESD HOODIED SWEATSHIRT

## FEATURES

- Available sizes: unisex XS - 5XL
- Hood with strings
- With ESD Symbol on sleeve
- ESD Cuff
- 2 side pockets

Embroidered or printed company logo or text available upon request!

Individual custom made ESD Clothing also available!

## AVAILABLE FABRICS AND COLOURS

### THSS FABRIC



### THSB FABRIC



## ORDERING CODE

**SKS** - **THSS** - **NB** **L**  
 style fabric colour size



Certified clothing according to the 2016 ESD standard. It's proved with the following tag.

## SIZE CHART (cm)

SKS ESD Hoodied sweatshirt	XS	S	M	L	XL	XXL	3XL	4XL	5XL
Sleeve	52	53	57	61	63	65	67	67	68
Length	64	66	68	70	72	74	76	76	76
Chest	100	106	112	118	124	130	136	142	148
Shoulder	41	43	45	47	49	51	54	57	60

Size tolerance (Before washing): 2%



# VES-S ESD QUILTED VEST



## FEATURES

- Available sizes: unisex XS - 5XL
- Inlined
- Hidden snap-fasteners
- ESD symbol on chest
- 2 side pockets
- Not waterproof

Embroidered or printed company logo or text available upon request!

Individual custom made ESD Clothing also available!

## AVAILABLE FABRICS AND COLOURS

### CT35 FABRIC



Other fabric types and colours also available with MOQ. Please send your request to: : [sales@destsa.hu](mailto:sales@destsa.hu)

### ORDERING CODE

**VES-S** - **CT35** - **W** **L**  
 style fabric colour size



Certified clothing according to the 2016 ESD standard. It's proved with the following tag.

### SIZE CHART (cm)

VES-S ESD Quilted vest	XS	S	M	L	XL	XXL	3XL	4XL	5XL
Chest	102	110	118	126	132	138	144	150	154
Length	64	66	68	70	72	74	76	78	80

Size tolerance (Before washing): 2%

# VES-H ESD QUILTED VEST

WITH ZIPPER

## FEATURES

- Available sizes: unisex XS - 5XL
- Inlined
- With zipper
- ESD symbol on chest
- 2 side pockets
- Not waterproof

Embroidered or printed company logo or text available upon request!

Individual custom made ESD Clothing also available!

## AVAILABLE FABRICS AND COLOURS

### CT35 FABRIC

W

Other fabric types and colours also available with MOQ.  
Please send your request to: : [sales@destsa.hu](mailto:sales@destsa.hu)

### ORDERING CODE

**VES-H - CT35 - W L**  
style fabric colour size



Certified clothing according to the 2016 ESD standard. It's proved with the following tag.

### SIZE CHART (cm)

VES-H ESD Quilted vest	XS	S	M	L	XL	XXL	3XL	4XL	5XL
Chest	102	110	118	126	132	138	144	150	154
Length	64	66	68	70	72	74	76	78	80

Size tolerance (Before washing): 2%



# WH ESD WINTER HAT



## FEATURES

- Available sizes: Unisex, one size
- With ESD Symbol
- Comfortable
- Warm and breathable

Embroidered or printed company logo or text available upon request!

Individual custom made ESD Clothing also available!

## AVAILABLE FABRICS AND COLOURS

### PS21 FABRIC



### ORDERING CODE

**WH** - **PS21** - **NB**  
style fabric colour



Certified clothing according to the 2016 ESD standard. It's proved with the following tag.

# WS ESD SCARF

## FEATURES

- Available sizes: Unisex, one size
- With ESD Symbol
- Comfortable
- Warm and breathable

Embroidered or printed company logo or text available upon request!

Individual custom made ESD Clothing also available!

## AVAILABLE FABRICS AND COLOURS

### PS21 FABRIC



### ORDERING CODE

**WS** - **PS21** - **NB**  
 style fabric colour



Certified clothing according to the 2016 ESD standard. It's proved with the following tag.





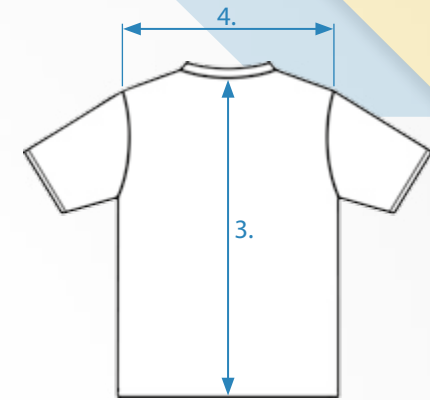
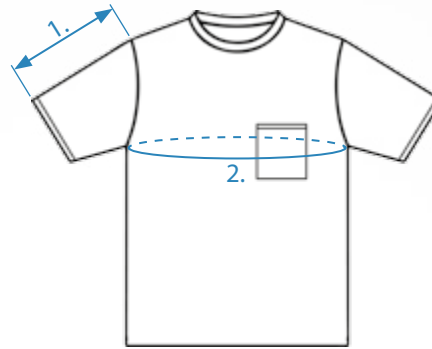
# SIZE CHARTS

**PGO** **PGZ** **TGO** **TGZ**

**TKO** **TKZ** **TLY**

## DESCRIPTION

- 1. Sleeve
- 2. Chest
- 3. Length
- 4. Shoulder

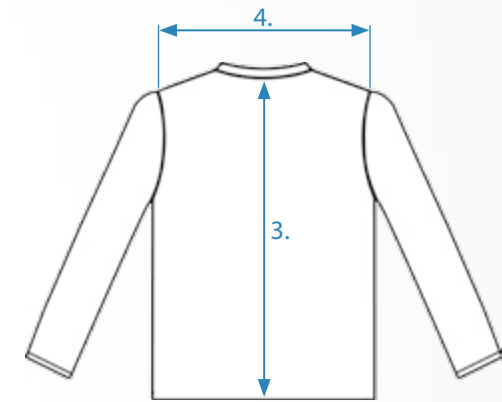
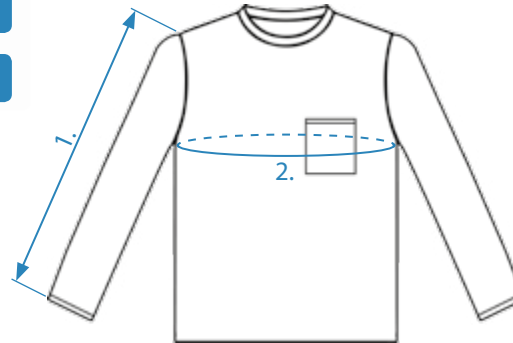


**CAL** **CAS** **LGO** **LGZ** **LKO** **LKZ**

**QGO** **QGZ** **SGS** **SKS** **SWS** **WJ**

## DESCRIPTION

- 1. Sleeve
- 2. Chest
- 3. Length
- 4. Shoulder

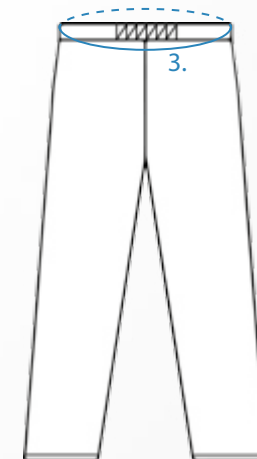
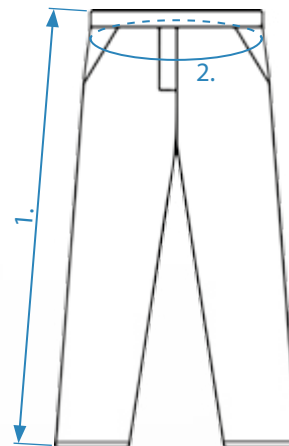


**ET** **ETF** **NT** **NTF**

**OT** **RG** **WN**

## DESCRIPTION

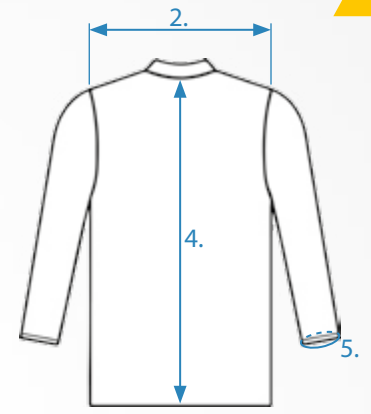
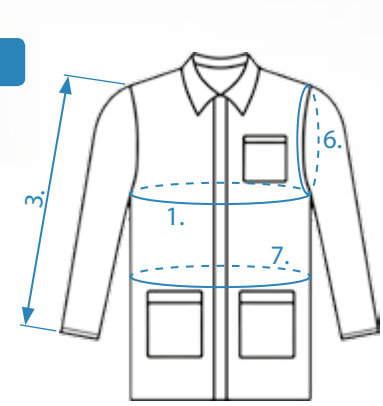
- 1. Length external
- 2. Hip
- 3. Waist



- EFL**
- EFS**
- EFX**
- ESL**
- ESS**
- ESX**
- OJ**
- PF1**
- PS1**
- PF2**
- PS2**
- PF3**
- PS3**

DESCRIPTION

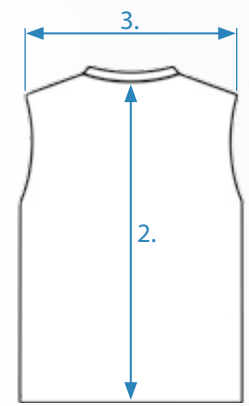
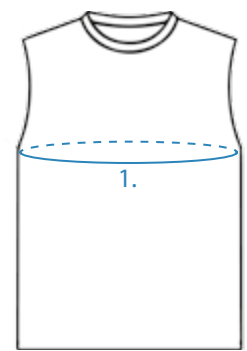
- 1. Chest
- 2. Shoulder
- 3. Sleeve
- 4. Length
- 5. Cuff
- 6. Shoulder outline
- 7. Hip



- HIV**
- SGW**
- SWW**
- VES-H**
- VES-S**
- WW**

DESCRIPTION

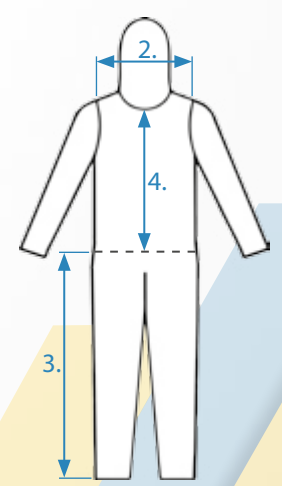
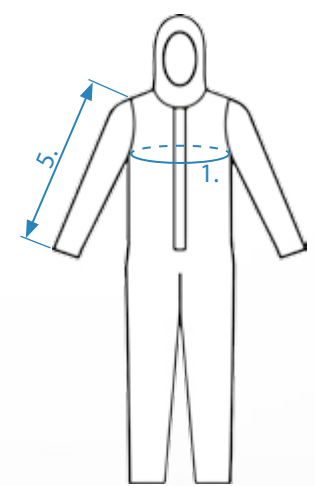
- 1. Chest
- 2. Length
- 3. Shoulder



OLL

DESCRIPTION

- 1. Chest
- 2. Shoulder
- 3. Length external from waist
- 4. Length from neck to waist
- 5. Sleeve





# LOGO DESIGN

There is a possibility to give an individual look to our garments with your company logo. High quality embroidery or printing also available.

Please send your logo in \*.jpg forma via e-mail, we will prepare our offer to you.

# NOTES

Lined area for notes



### **D és Tsa. Bt.**

**Office and Warehouse:**  
2600 Vác, Gálcsék u. 8-10.

**Phone:** +36 27 502 555

**Email:** sales@destsa.hu

**Web:** www.dlb.hu